



## LIFTING/STEALTH SLINGS

Stealth Slings	PAGE 4
Endless Grommets	PAGE 4
Adjustable Lifting Slings	PAGE 5

## SHACKLES

Soft UHMwPE Shackles	PAGE 6
Mongoose® D-Lite™ Shackle	PAGE 7

## RECOVERY STROPS & BODY TRAY SLING

Mongoose® Heavy Duty Tow Strop	PAGE 8
Mongoose® Heavy Duty V Strop & Y Strop	PAGE 9
Mongoose® Classic Recovery Strop	PAGE 9
Mongoose® Kinetic Recovery Kit	PAGE 10
Mongoose® Heavy Duty Body Tray Slings	PAGE 10

## WIRE ROPE & CHAIN REPLACEMENT

Stealth® UHMwPE 12 Strand Braid	PAGE 12
---------------------------------	---------

## SYNTHETIC CABLE STOCKING

Grip Tech	PAGE 13
-----------	---------

## CHAFE PROTECTION

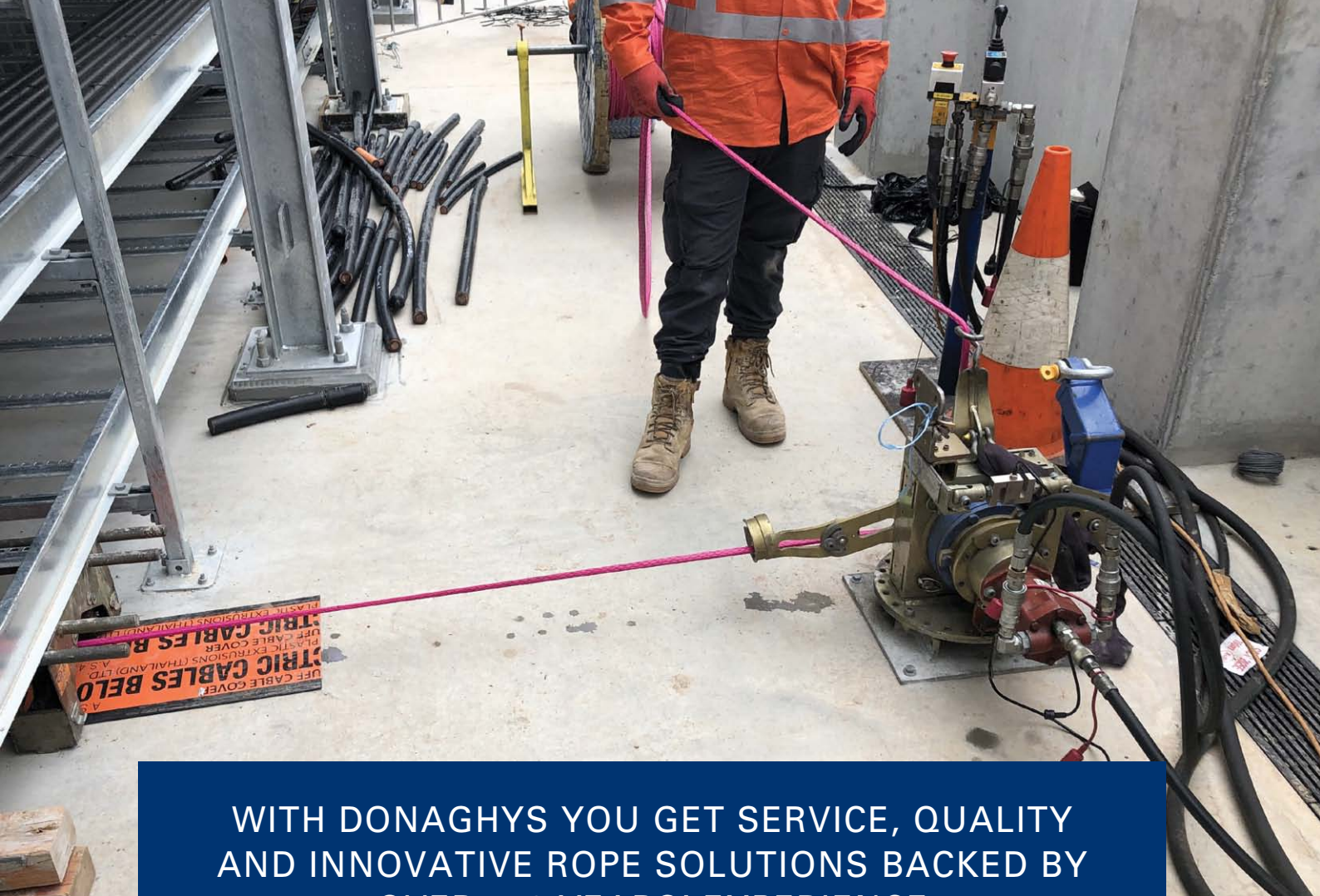
Mongoose® HMPE Eye Guard	PAGE 14
HMPE Chafe Guard	PAGE 15
Chafe Pro Commercial Series	PAGE 15

## SPLICING & TERMINATIONS

Splicing	PAGE 16
Terminations	PAGE 17

## TECHNICAL INFORMATION

Care and Use	PAGE 18
Charts	PAGE 20-29
Fibre Qualities	PAGE 30



**WITH DONAGHYS YOU GET SERVICE, QUALITY AND INNOVATIVE ROPE SOLUTIONS BACKED BY OVER 150 YEARS' EXPERIENCE**

Our people deliver daily on this promise through commitment to our customers expectations, understanding requirements and facilitating the best results through experience and professionalism.

Our plants deliver this promise through continuous development programs, technology investment and internationally recognised ISO9001 accredited systems and certification on quality.

Donaghys innovation is the outcome of combining people, state of the art manufacturing and passion to provide the highest standard and commitment. Rope is our business, we know it, we live it and we evolve it into ever new and exciting applications.

Donaghys ropes are built to last, are performance based and we have extensive ranges to deliver the best and most appropriate and economic solution to your rope requirements.

We look forward to the opportunity to assist you with your next project or ongoing rope requirements.

We've been a proud Rope business since 1876 when founded by John Donaghy in Dunedin, New Zealand. Today we look to the future, in partnership with our customers to deliver mutual growth and success.

For any questions or comments please don't hesitate to contact us.



## Stealth Slings

### FEATURES/BENEFITS

- Manufactured in single & multi leg sling assemblies
- Lightweight, flexible, with minimal elongation and recoil
- Traceability ID Tags
- Available in heavy duty zip carry bag
- Safety Factor is 5:1 as per AS18264
- Protective or removable inspection sleeve available on request
- All sling assemblies comes with proof load certification

### APPLICATIONS

- Onshore & Offshore applications
- Lifting and tethering in leisure marine applications
- General purposes
- Complex applications

### RANGE

- Manufactured in accordance with customer specification
- Diameters from 12mm and above



## Endless Grommets

### FEATURES/BENEFITS

- UHMwPE Core with Urethane coated Polyester braided jacket
- Light weight & flexible to assist reducing overall rigging weight and handling
- Safety Factor is 5:1 as per AS18264
- All sling assemblies comes with proof load certification

### APPLICATIONS

- Heavy Lifts
- Onshore and offshore applications
- Lifting and tethering in leisure marine applications
- General
- Complex applications

### RANGE

- Manufactured in accordance with customer specification
- Diameters from 12mm and above





### Adjustable 1 or 2-Leg UHMwPE Lifting Sling

#### FEATURES/BENEFITS

- Available in a 1 or 2-leg configuration or in an adjustable grommet
- Lightweight, flexible, with minimal elongation and recoil
- Eye chafe protection against sharp edges
- Stopper knot tails to ensure added protection against accidental release
- Easy installation adjustable to desired length for uneven loads

#### APPLICATIONS

- Onshore & Offshore applications
- Lifting and tethering in leisure marine applications
- General purpose lifting
- Complex applications

#### RANGE

- Manufactured in accordance with customer specification
- Diameters from 12mm and above
- For full specifications including W.L.L please contact your local Donaghys representative

Complies to Australian Standard Lifting Slings AS 18264:2022

Designed with performance and safety in mind, the Donaghys Adjustable 1 or 2-Leg UHMwPE Sling brings innovation to heavy lifting. This sling allows for fast, tool-free installation and quick leg adjustment cutting downtime and improving jobsite efficiency.

Constructed using high-strength, lightweight Stealth® Winchline rope, the sling is free of metal components, making it easy to handle, transport, and store. It's simple adjustability at ground level allows for safer and more effective lifting of uneven loads helping to minimise the risk of manual handling injuries.





## Soft UHMwPE Shackles

### FEATURES/BENEFITS

- The perfect replacement for traditional metal shackles
- UHMwPE soft fibre shackle protected by an abrasion and UV resistant Urethane coating
- Made to connect strops or slings to vehicles
- Will not rust or corrode
- Soft and will not damage surfaces around it
- Does not require tools to use
- Will not shatter in the event of a failure as with metal shackles
- Versatile, lightweight, safe and easy to use
- Designed to use in conjunction with Donaghys Mongoose® Recovery Strop range
- All shackles 9.5 tonne and above come complete with cover
- Optional covers available on other sizes on request

### APPLICATIONS

- Light, Medium and Heavy vehicle towing and recovery
- Leisure Marine
- Mining
- Civil
- Farming
- Offshore

### RANGE

- 1.2 tonne - 600T
- For full range and specifications see Page 23



## Mongoose® D-Lite™ Shackle

### FEATURES/BENEFITS

- Extreme strength-to-weight ratio, 50% lighter than conventional steel shackles
- Safer than conventional shackles (low risk of explosive disintegration)
- Hydrophobic fiber crown (no water absorption)
- Synthetic fiber crown maintains high strength around tight radius bends
- HMPE covered eyes to ensure high performance against abrasion
- Integrated locking end cap with locking screw
- Individual serial number provides traceability
- High tensile steel alloy pins to suit most OEM recovery points
- Ultra-high molecular weight polyethylene
- 32 cN/dtex tenacity
- 3.5% elongation at break
- Heat Treated High Tensile Steel Alloy
- 1200 MPa Tensile Strength
- 10% Minimum elongation (Ductility)
- 2-part epoxy coated
- 0.98 g/cm<sup>3</sup> density

### APPLICATIONS

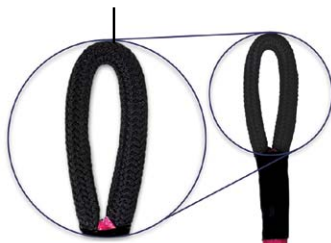
- Salvage and Marine vessels
- Light, Medium and Heavy vehicle towing and recovery

### RANGE

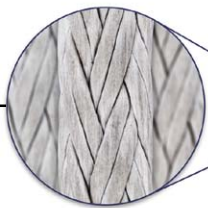
- For full range and specifications see Page 24



Heavy duty Nylon covered body with UHMWPE covered eyes for extra wear and abrasion resistance



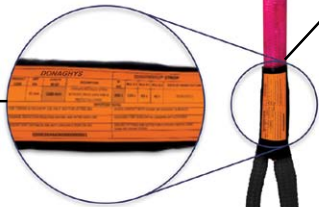
Extreme strength from Winchline core



NFC tag for readability



Traceable ID Tags



MONGOOSE BY DONAGHYS

## Mongoose® Heavy Duty Tow Strop

### FEATURES/ BENEFITS

- Heavy duty Nylon covered body
- UHMWPE reinforced soft eyes
- Ultra high strength to weight ratio
- Low elongation
- Lightweight and flexible
- Traceability (durable I/D tags)
- Individual serial number provides traceability
- Reduced hand injuries i.e. no fish-hooking like wire rope
- Highly resistant to wear and flex fatigue
- Heavy duty zip carry bag
- Thimbles & hardware available on request

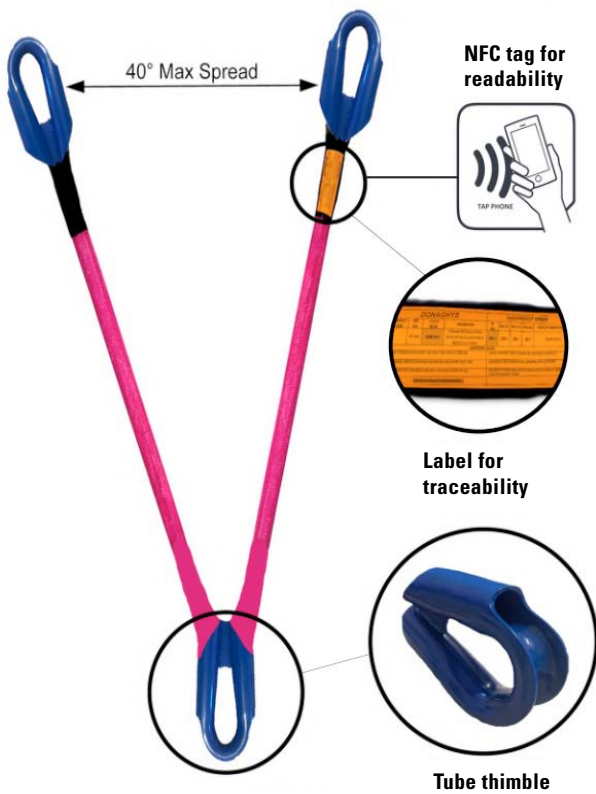
### APPLICATIONS

- Light, Medium and Heavy vehicle towing and recovery
- Leisure Marine
- Mining
- Civil
- Farming
- Offshore
- Military

### RANGE

- 30 tonne - 500 tonne
- Available from 3m - 20m lengths
- For full range and specifications see Page 25





## Mongoose® Heavy Duty V Strop & Y Strop

### FEATURES/BENEFITS

- Ultra high strength to weight ratio
- Lightweight, flexible, with minimal elongation and recoil
- Traceability (durable I/D tags)
- Individual serial number provides traceability
- Reduced hand injuries i.e. no fish-hooking like wire rope
- Heavy duty Nylon covered body
- Highly resistant to wear and flex fatigue
- Heavy duty zip carry bag
- Rope equalises through head tube thimble ensuring constant load on tow legs
- Available with thimble eyes or reinforced soft eyes

### APPLICATIONS

- Light, Medium and Heavy vehicle towing and recovery
- Leisure Marine
- Mining
- Civil
- Farming
- Offshore
- Military

### RANGE

- 30 tonne - 500 tonne
- Manufactured in accordance with customer specification



## Mongoose® Classic Recovery Strop

### FEATURES/BENEFITS

- Heavy Duty Polyester protective jacket with UHMwPE core
- Urethane coated jacket and eyes
- Reinforced eyes
- High strength to weight ratio
- Lightweight & flexible
- Low elongation
- Certified with individual serial number

### APPLICATIONS

- Light, Medium and Heavy vehicle towing and recovery
- Leisure Marine
- Mining
- Civil
- Farming
- Offshore
- Military

### RANGE

- 30 tonne - 300 tonne
- Available from 6m - 15m lengths
- For full range and specifications see Page 24



### Mongoose® Kinetic Recovery Kit

#### FEATURES/BENEFITS

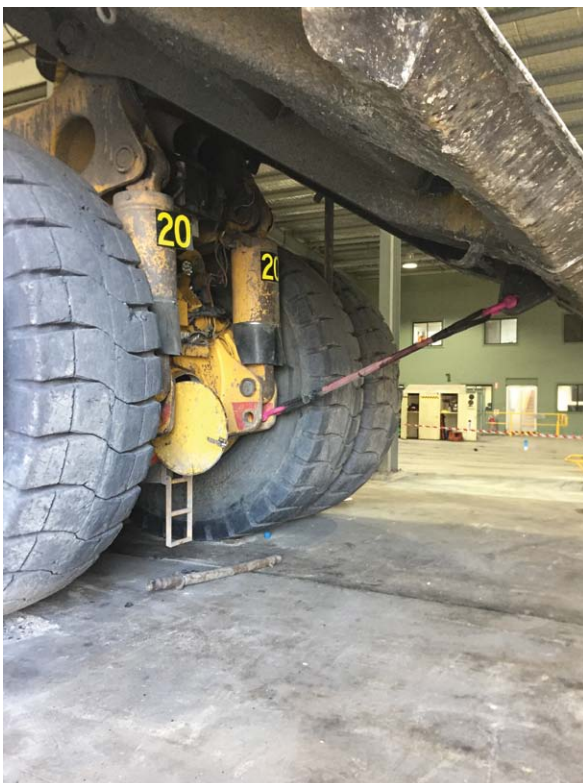
- Recovery Kit contains Kinetic Recovery Strop 13Tx9m and 2x13T Soft Shackles complete in a carry bag
- Waterproof polymer coating assists with cut and abrasion resistance to extend longevity
- Lightweight and flexible
- Recovery strop stretches up to 30% under load
- Unique serial number for traceability

#### APPLICATIONS

- Light vehicle towing and recovery
- 4x4
- Mining
- Civil
- Farming
- Forestry
- Military

#### RANGE

- 13 tonne
- For full range and specifications see Page 26



### Mongoose® Heavy Duty Body Tray Slings

#### FEATURES/BENEFITS

- Manufactured to custom lengths to suit all vehicle makes and model
- Maintenance repairs on dump trucks require the dump body to be elevated - Donaghys Mongoose® Heavy Duty Body Tray Slings assist to share the load of the dump body when raised
- Lightweight, more flexible and safer than wire ropes and chain
- Easy handling for improved efficiency
- Heavy duty Nylon urethane coated jacket provides excellent abrasion and cut out resistance against harsh elements
- Low elongation, less than 4% at break
- Individual serial number provides traceability

#### APPLICATIONS

- Safety sling for maintenance on all types of Mining Trucks

#### RANGE

- 30 tonne - 200 tonne
- Manufactured in accordance with customer specification





## Stealth® UHMwPE 12 Strand Braid

### FEATURES/BENEFITS

- Extreme strength to weight ratio
- UHMwPE is 15 times stronger than steel wire rope
- High UV and chemical resistance
- Floats and does not absorb water
- Low creep
- Lightweight, flexible, with minimal elongation and recoil
- Will not kink
- Easy to splice
- Urethane coating for added abrasion resistance and reduces slipping on bare surfaces
- Long continuous lengths available which removes waste factors and enhances hauling/winch lines integrities

### APPLICATIONS

- Strops and Slings
- Winch lines
- 4x4 Winch ropes
- Vehicle rescue/recovery
- Mining
- Logging applications
- Towing line
- Pulling/stringing lines
- Marine applications

### RANGE

- 0.31 tonne - 788 tonne
- Other tonnages are available in accordance with customer specification
- For full range and specifications see Page 27





## Grip Tech

### FEATURES/BENEFITS

- Quick, easy, secure cable eye attachment
- Strong and light weight
- Texturised for extra grip
- Low stretch
- Flexible, compact and easy to handle
- High abrasion resistance
- Max. operating temperature of 500°C
- Certified tonnage rating
- Colour coding
- Traceable ID tags
- 16 Strand Aramid Rope Grip

### APPLICATIONS

- Cable installation
- Cable maintenance
- Cable towing
- Strain relief
- Applicable to any cylindrical surface including wire and fibre rope

*Caution: Test Grip Tech on desired surface before use*

### RANGE

- For full range and specifications see Page 28





## Mongoose® HMPE Eye Guard

### FEATURES/BENEFITS

- Specifically designed to use in conjunction with the Mongoose® Recovery Strop and Soft Shackle range
- Added protection against sharp edges
- Improves longevity of Recovery Strop or Soft Shackle
- Made from Stealth® UHMwPE fibre
- Easy to install
- Lightweight & flexible
- Eliminates the use of steel hardware
- Eye Guard dimension is 18cm x 110cm
- Suits Mongoose® Strop with an eye size of 0.5m - 1m
- Suits Soft Shackle with an open length of 1m - 2.5m

### APPLICATIONS

- Added abrasion and cut resistance for use on Mongoose® Recovery Strop and Soft Shackle products

### RANGE

- For full range and specifications see Page 28





## HMPE Chafe Guard

### FEATURES/BENEFITS

- Stealth® fibre single cover braid
- High UV resistance
- High abrasion resistance
- Solution dyed, will not fade in colour
- Provides added protection against abrasive surfaces

### APPLICATIONS

- For use on Donaghys UHMwPE products

### RANGE

- For full range and specifications see Page 28



## Chafe Pro Commercial Series

### FEATURES/BENEFITS

- Manufactured using heavy duty Nylon weave
- Designed to use in conjunction with the Mongoose® Recovery Strops, UHMwPE Slings, Soft Shackles and Stealth® UHMwPE Winchline range
- Provides added protection against abrasive surfaces
- Removable Velcro sleeve ideal for easy visual inspections

### APPLICATIONS

- Added abrasion & cut resistance for use on Mongoose® Recovery Strops, UHMwPE Slings, Soft Shackles and Stealth® UHMwPE Winchline range

### RANGE

- For full range and specifications see Page 29

## Splicing

Donaghys are proud to offer an in-house splicing service available on all our rope and cordage products, delivered to you packaged in cartons or reeled onto timber drums.



### Soft Eye Splice

- Flexible soft eye which can be tailored for inner eye sizing
- All rope constructions i.e. 3 strand, 8, 12 and double braid can be spliced



### Thimble Eye

- Standard thimble eye (with open "V"), available in galvanised steel, stainless steel or nylon
- Strengthens and protects spliced eye against abrasion
- Light applications e.g. anchor ropes



### Sewn Eye

- Sewn eye options available to braided ropes from 6mm to 16mm
- Retains more strength than a conventional splice
- Thimble options available



### Tube Webbing Serving

- Available for soft eye covering or both eyes and full body
- Protects from grit which can cause internal or external damage through abrasion
- Applying to eye gives added life by protecting at the bearing point



### Endless Spliced Grommet

- A flexible continuous rope join primarily for 12 strand ropes
- Join to be positioned between bearing point and load
- 1.6 times strength of braid tensile in grommet configuration



### End Whipping

- It is important that whipping is applied to any bare end of rope in order to prevent the unraveling or fraying of the strands



### Drum Winding

- Winch line delivered in this form allows for easy rewinding onto existing winch drums
- Also protects line against damage during transport

## Terminations



### Galvanized Steel Thimble

- Manufactured from heat treated high tensile steel
- Suitable for high use, high load applications
- Strengthens and protects spliced eye against abrasion
- Available in standard or AS1138 compliant



### Steel Tubed Thimble

- Offer greater protection for the eye
- Tubed ends help incapsulate rope to prevent thimble falling out



### Gusseted Tubed Thimble

- Heavy duty applications
- The gusset prevents the distortion of thimble under extreme load



### Captive Thimble Eye

- Heavy duty applications
- Captive thimble eye with welded " V "
- Recommended for use with synthetic ropes to keep the rope and thimble uniform at all times



### Eye Sling Hook with Safety Latch

- This fitting is used in conjunction with a steel thimble for many industrial applications
- Rated and AS3776 compliant



# DONAGHYS MONGOOSE RECOVERY STROP CARE & USE GUIDELINES

<p><b>1. Safe Operating Procedures</b></p> <ul style="list-style-type: none"> <li>• Always follow safe recovery practices. Improper use can cause injury, equipment damage or loss of vehicle control, particularly on slopes or uneven ground.</li> <li>• Ensure all recovery points are clearly marked and suitable for recovery / towing.</li> <li>• Confirm all recovery attachments are compatible and in good condition before use.</li> <li>• Only use the Mongoose® recovery strop for straight-line vehicle recovery. Do not use for lifting or suspending.</li> <li>• Never exceed rated capacity. If unsure of the forces involved, do not attempt the recovery.</li> </ul>	<p><b>3. Safe Use During Recovery</b></p> <ul style="list-style-type: none"> <li>• Only perform recovery with the strop in a straight-line configuration.</li> <li>• Do not apply jerking motions - use slow, steady force to avoid shock loading.</li> <li>• Ensure recovery strop is attached to approved recovery points.</li> <li>• Keep all people clear during recovery. Maintain a minimum safety distance (e.g. 2 to 3 times the recovery strop length).</li> <li>• Never stand over, beside or near the strop during use. All equipment - including shackles and connectors - can fail unexpectedly.</li> </ul>
<p><b>2. General Care &amp; Inspection</b></p> <ul style="list-style-type: none"> <li>• Inspect the strop before and after every use. Do not use if any of the following are present:             <ul style="list-style-type: none"> <li>- Exposed or broken inner core fibres</li> <li>- Fire or chemical damage</li> <li>- If tag is unreadable or removed</li> </ul> </li> <li>• Avoid exposure to temperatures above 100°C or contact with open flames.</li> <li>• Do not store recovery strop wet or contaminated. Let dry thoroughly, hang up and store in a clean, dry area away from UV and chemicals.</li> </ul>	<p><b>4. Identification, Tags &amp; Traceability</b></p> <ul style="list-style-type: none"> <li>• All Donaghys Mongoose® recovery strops are fitted with identification tags.</li> <li>• If a tag is damaged or removed, RFID chip is available for quick identification.</li> <li>• Do not use recovery strop if tag is missing or unreadable take out of service until recovery strop has been inspected and re-tagged.</li> <li>• For full traceability, maintain records of use, inspections and tag replacements.</li> </ul>

# VISUAL INDICATORS - EXAMPLE

### Internal Inspection

This can be determined by pulling one strand away from the others, looking for powdered or broken fibre filaments.



### Compression

When the rope exhibits fibre set from compression a slight sheen is visible, this is not a permanent condition and can be eliminated by flexing the rope.



### Discolouration

On strop body is noticeable along with fused, stiff or brittle fibres extending into the core. Probable cause is exposure to chemical contamination.

## IT IS RECOMMENDED YOUR STROP BE RETIRED IF: -



Melting and Abrasion is evident on the strops body and including fused fibres, visible charring and where jacket fores expose core and visible abrasion/ damage is seen. Probable cause is exposure to excessive heat, shock or sustained load.



Inspection of the strops body reveals inconsistency in Diameter, Lumps/Bumps/Flat Areas with no external visible damage to jacket is probable indication of internal damage i.e. Shock Loaded, Broken Internal Strands.



The outer jacket can sustain wear and damage without compromise to the load bearing core. However, if sections of jacket expose the core, via broken strands etc, careful inspection is required. Fusion of jacket fibres may extend to core.

## DONAGHYS VEHICLE RECOVERY CHART

Strop Size	Maximum allowable force applied	Lightly Bogged	Medium Bugged	Massively Bugged
in tonnes (MBS)	in tonnes (considering a 2:1 FOS)	Vehicle in tonnes	Vehicle in tonnes	Vehicle in tonnes
30	15	60	30	12
50	25	100	50	21
70	35	140	70	29
100	50	200	100	42
150	75	300	150	63
200	100	400	200	83
250	125	500	250	104
300	150	600	300	125
350	175	700	350	146
400	200	800	400	167
450	225	900	450	188
500	250	1000	500	208

### DEFINITIONS

<b>Lightly Bugged Vehicle</b> (Applied force = 25% of GVM)	A vehicle that is experiencing minimal loss of traction, typically with one or more wheels spinning but with no significant sinking into the surface. Little to no chassis contact with the ground. Minor wheel spin because of slippery or wet surfaces.
<b>Medium Bugged Vehicle</b> (Applied force = 50% of GVM)	A vehicle that is partially stuck, with moderate loss of traction and some sinking into soft terrain (e.g. mud, sand, snow), potentially requiring assistance. Some chassis or axle contact with the ground. Multiple wheels spinning.
<b>Massively Bugged Vehicle</b> (Applied force = 120% of GVM)	A vehicle that is deeply embedded in terrain with significant loss of mobility. Recovery is complex and requires substantial external effort. Chassis or axles buried. All wheels lack of traction.

MBS = Minimum Breaking Strength    GVM = Gross Vehicle Mass

The data provided in this chart aims to clarify common misunderstandings about the forces required to tow heavy vehicles. This vehicle recovery chart is intended to assist in selecting the correct strop size.

## INCLINE CHART

Strop Size (T)	GVM (T)	GVM (T)	GVM (T)	GVM (T)	GVM (T)
Minimum Breaking Strength in tonnes (MBS)	Gradient 1 in 10 Incline 6 Deg	Gradient 1 in 6 Incline 9.5 Deg	Gradient 1 in 5 Incline 11 Deg	Gradient 1 in 4 Incline 14 Deg	Gradient 1 in 3 Incline 18 Deg
30	122	77	67	53	41
50	203	129	88	69	69
70	285	180	96	123	96
100	407	258	223	176	138
150	610	386	334	264	206
200	813	515	445	351	275
250	1016	644	557	439	344
300	1220	773	668	527	413
350	1423	901	780	615	481
400	1626	1030	891	703	550
450	1830	1159	1002	791	619
500	2033	1288	1114	878	688

\* This resistance figure allows for unsealed roads. For compact roads it could be reduced by half

**NOTE \***

The above table shows the recommended GVM (**Gross Vehicle Mass**) to be towed up ramps of various inclines, with each size strop. The estimates are based on a safety factor of 2 that is the load applied to the strop is half of its breaking strength. (see calculation formula below)  
 The rolling resistance component is estimated at 15% of GVM.

**CALCULATION FORMULA used to compute above figures - for ramp incline of Q (degrees)**

$$\frac{\text{BS of strop}}{\text{Sine Q}} \times 0.5 \text{ ( F of S )} \times 0.85 \text{ (rolling resistance allowance)} = \text{the GVM}$$











**Example calculation:**

**What weight of vehicle (GVM) can be towed up a 1 in 5 ramp with a 100 tonne BS strop, using half of its UTS ?**

$$\frac{100}{\text{Sine 11}} = \frac{100}{0.1908} \times 0.5 \times 0.85 = 223 \text{ tonnes}$$

STEALTH UHMWPE LIFTING SLING W.L.L CHART

To: AS18264: 2022

Sling Configuration		Direct Load	Choke Hitch		Basket Hitch			Multi Leg 2,3,&4			Grommets	
Rope Dia	MBL											
Norminal Dia	MBL (T)					60°	90°	120°	60°	90°	120°	

WORKING LOAD LIMITS IN TONNES

Rope Dia	MBL (T)	Direct Load	Choke Hitch	Choke Hitch	Basket Hitch	Basket Hitch	Basket Hitch	Basket Hitch	Multi Leg	Multi Leg	Multi Leg	Grommets
					60°	90°	120°	60°	90°	120°		
12mm	17.0	3.06	2.30	1.53	6.12	5.20	4.28	3.06	5.20	4.28	3.08	5.44
14mm	19.9	3.58	2.69	1.791	7.16	6.09	5.01	3.58	6.09	5.01	3.58	6.37
16mm	25.6	4.61	3.46	2.304	9.22	7.83	6.45	4.61	7.83	6.45	4.61	8.19
18mm	34.8	6.26	4.70	3.132	12.53	10.65	8.77	6.26	10.65	8.77	6.26	11.14
20mm	41.3	7.43	5.58	3.717	14.87	12.64	10.41	7.43	12.64	10.41	7.43	13.22
22mm	45.8	8.24	6.18	4.122	16.49	14.01	11.54	8.24	14.01	11.54	8.24	14.66
24mm	55.0	9.90	7.43	4.95	19.80	16.83	13.86	9.90	16.83	13.86	9.90	17.60
26mm	67.8	12.20	9.15	6.102	24.41	20.75	17.09	12.20	20.75	17.09	12.20	21.70
28mm	76.7	13.81	10.35	6.903	27.61	23.47	19.33	13.81	23.47	19.33	13.81	24.54
32mm	94.0	16.92	12.69	8.46	33.84	28.76	25.68	16.92	28.76	23.69	16.92	30.08
36mm	118.7	21.37	16.02	10.683	42.73	36.3	29.91	21.37	36.32	29.91	21.37	37.98
40mm	145.6	26.21	19.66	13.104	52.42	44.55	36.69	26.21	44.55	36.69	26.21	46.59
42mm	158.9	28.50	21.45	14.301	57.20	48.62	40.04	28.60	48.62	40.04	28.60	50.85
44mm	174.4	31.39	23.54	15.696	62.78	53.37	43.95	31.39	53.37	43.95	31.39	55.81
52mm	230.0	41.40	31.05	20.7	82.80	70.38	57.96	41.40	70.38	57.96	41.40	73.60
60mm	297.8	53.60	40.20	26.802	107.21	91.13	75.05	53.60	91.13	75.05	53.60	95.30
72mm	403.3	72.59	54.45	36.297	145.19	123.41	101.63	72.59	123.41	101.63	72.59	129.06

Note:

- Above WILL are based on the spliced MBL of the rope as per manufactures specifications
- For UHMPE slings, refer to AS18264 Section B.1 for guidance on the rating & de-rating of slings in relation to fittings and connected components. We recommend a minimum D'd ration (diameter of the fitting to the diameter of the sling) of 5:1.
- Use of components with a lower D/d ratio will result in a reduction to the W.LL values shown in this chart.
- Example: 1.5 D/d ratio will result in a 25% reduction of the above W.LL (D24mm/d 16mm (1.5) = 9.22t Basket W.L.L x .75 (-25%) = 6.91t

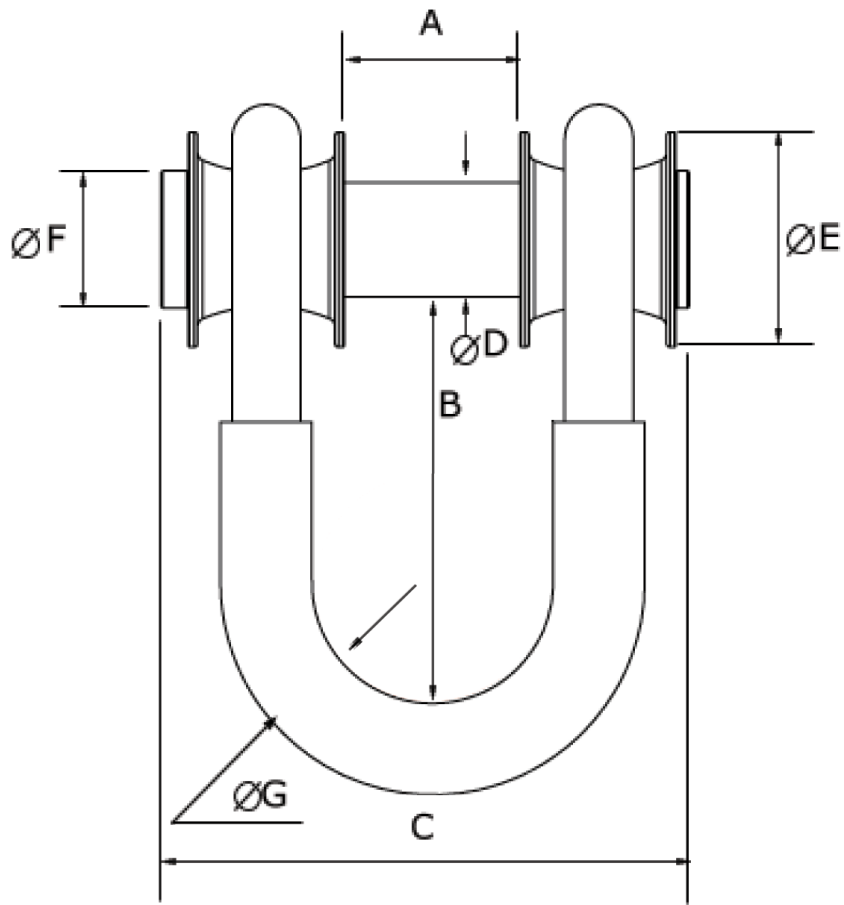
**Soft UHMwPE Shackles**

Product Code	Finished Dia. (mm)	Description	Open Length (m)	Net Weight (kg)
RBRS012TSS	6mm	SOFT SHACKLE INDUSTRIAL 1.2T	0.15	0.005
RBRS018TSS	8mm	SOFT SHACKLE INDUSTRIAL 1.8T	0.15	0.010
RBRS031TSS	10mm	SOFT SHACKLE INDUSTRIAL 3.1T	0.15	0.015
RBRS044TSS	12mm	SOFT SHACKLE INDUSTRIAL 4.4T	0.5	0.043
RBRS062TSS	14mm	SOFT SHACKLE INDUSTRIAL 6.2T	0.5	0.080
RBRS095TSS	18mm	SOFT SHACKLE INDUSTRIAL 9.5T COVERED	0.5	0.118
RBRS0125TSS	20mm	SOFT SHACKLE INDUSTRIAL 12.5T COVERED	0.5	0.130
RBRS14TSS	22mm	SOFT SHACKLE INDUSTRIAL 14T COVERED	1	0.242
RBRS0157TSS	24mm	SOFT SHACKLE INDUSTRIAL 15.7T COVERED	1	0.256
RBRS0221TSS	28mm	SOFT SHACKLE INDUSTRIAL 22.1T COVERED	1	0.421
RBRS0259TSS	32mm	SOFT SHACKLE INDUSTRIAL 25.9T COVERED	1	0.500
RBRS0306TSS	32mm	SOFT SHACKLE INDUSTRIAL 30.6T COVERED	1.5	0.760
RBRS0451TSS	40mm	SOFT SHACKLE INDUSTRIAL 45.1T COVERED	1.5	1.2
RBRS0589TSS	48mm	SOFT SHACKLE INDUSTRIAL 58.9T COVERED	1.5	1.6
RBRS0797TSS	56mm	SOFT SHACKLE INDUSTRIAL 79.7T COVERED	1.5	2.9
RBRS1097TSS	68mm	SOFT SHACKLE INDUSTRIAL 109.7T COVERED	1.5	4.4
RBRS1534TSS	80mm	SOFT SHACKLE INDUSTRIAL 153.4T COVERED	1.5	7.2
RBRS2054TSS	96mm	SOFT SHACKLE INDUSTRIAL 205.4T COVERED	2	10.6
RBRS260TSS	112mm	SOFT SHACKLE INDUSTRIAL 260T COVERED	2	16.2
RBRS3094TSS	120mm	SOFT SHACKLE INDUSTRIAL 309.4T COVERED	2.5	19.0
RBRS3861TSS	138mm	SOFT SHACKLE INDUSTRIAL 386.1T COVERED	2.5	26.0

\* Donaghys Soft Shackles currently not approved for lifting under an Australian standard. We recommend a minimum D/d ratio of 2.5 between the bend diameter and the base rope diameter .

\* Note the base rope diameter is 50% of the finished diameter displayed in the range above

Mongoose® D-Lite



MBL	A	B	C	D	E	F	G	Weight
<b>62.5T</b>	33mm	300mm	121mm	35mm	65mm	42mm	25mm	2.2kg
<b>125T</b>	77mm	330mm	237mm	50mm	94mm	60mm	42mm	7.4kg
<b>175T</b>	88mm	330mm	265mm	58mm	110mm	70mm	46mm	11kg
<b>275T</b>	108mm	630mm	330mm	70mm	133mm	84mm	70mm	18.6kg
<b>350T</b>	122mm	630mm	380mm	80mm	157mm	95mm	80mm	30kg
<b>400T</b>	122mm	630mm	380mm	80mm	157mm	95mm	80mm	32kg
<b>500T</b>	145mm	630mm	420mm	95mm	186mm	114mm	90mm	47kg

**Mongoose® D-Lite™ Shackle**

Product Code	Description	Net Weight (kg)
RBRS0625TMDLS	MONGOOSE D-LITE 62.5T STROP	1.28
RBRS0625TMDLC	MONGOOSE D-LITE 62.5T COMPLETE	2.2
RBRS125TMDLS	MONGOOSE D-LITE 125T STROP	2.1
RBRS125TMDLC	MONGOOSE D-LITE 125T COMPLETE	5.2
RBRS175TMDLS	MONGOOSE D-LITE 175T STROP	3.4
RBRS175TMDLC	MONGOOSE D-LITE 175T COMPLETE	8.1
RBRS275TMDLS	MONGOOSE D-LITE 275T STROP	6.4
RBRS275TMDLC	MONGOOSE D-LITE 275T COMPLETE	14.4
RBRS350TMDLS	MONGOOSE D-LITE 350T STROP	8.8
RBRS350TMDLC	MONGOOSE D-LITE 350T COMPLETE	20
RBRS400TMDLS	MONGOOSE D-LITE 400T STROP	10.05
RBRS400TMDLC	MONGOOSE D-LITE 400T COMPLETE	26.3
RBRS500TMDLS	MONGOOSE D-LITE 500T STROP	14.5
RBRS500TMDLC	MONGOOSE D-LITE 500T COMPLETE	33.8

\* Donaghys Soft Shackles currently not approved for lifting under an Australian standard. We recommend a minimum D/d ratio of 2.5 between the bend diameter and the base rope diameter. \* Note the base rope diameter is 50% of the finished diameter displayed in the range above.

**Classic Recovery Strop**

Product Code	Eye Size (mm)	Description	Net Weight (kg)
RBRY30T06C	600	MONGOOSE CLASSIC RECOVERY STROP 30TNX6M	4.5
RBRY30T10C	600	MONGOOSE CLASSIC RECOVERY STROP 30TNX10M	8
RBRY50T06C	600	MONGOOSE CLASSIC RECOVERY STROP 50TNX6M	8.3
RBRY50T10C	600	MONGOOSE CLASSIC RECOVERY STROP 50TNX10M	12
RBRY50T15C	600	MONGOOSE CLASSIC RECOVERY STROP 50TNX15M	16.5
RBRY70T06C	600	MONGOOSE CLASSIC RECOVERY STROP 70TNX6M	11.2
RBRY70T10C	600	MONGOOSE CLASSIC RECOVERY STROP 70TNX10M	15.5
RBRY70T15C	600	MONGOOSE CLASSIC RECOVERY STROP 70TNX15M	19.5
RBRY100T6C	600	MONGOOSE CLASSIC RECOVERY STROP 100TNX6M	13
RBRY100T10C	600	MONGOOSE CLASSIC RECOVERY STROP 100TNX10M	20
RBRY100T15C	600	MONGOOSE CLASSIC RECOVERY STROP 100TNX15M	29
RBRY150T10C	600	MONGOOSE CLASSIC RECOVERY STROP 150TNX10M	34
RBRY150T15C	600	MONGOOSE CLASSIC RECOVERY STROP 150TNX15M	48
RBRY200T15C	600	MONGOOSE CLASSIC RECOVERY STROP 200TNX15M	53
RBRY300T15C	1000	MONGOOSE CLASSIC RECOVERY STROP 300TNX15M	75

**Mongoose® Heavy Duty Tow Strop**

Product Code	Eye Size 1-3m (mm)	Eye Size 6m+ (mm)	Description	Net Weight (kg)
RBRY30T03	300	600	MONGOOSE RECOVERY STROP 30TNX3M	1.69
RBRY30T06	300	600	MONGOOSE RECOVERY STROP 30TNX6M	3.13
RBRY30T10	300	600	MONGOOSE RECOVERY STROP 30TNX10M	5.06
RBRY30T15	300	600	MONGOOSE RECOVERY STROP 30TNX15M	7.46
RBRY30T20	300	600	MONGOOSE RECOVERY STROP 30TNX20M	9.87
RBRY50T03	300	600	MONGOOSE RECOVERY STROP 50TNX3M	2.44
RBRY50T06	300	600	MONGOOSE RECOVERY STROP 50TNX6M	4.2
RBRY50T10	300	600	MONGOOSE RECOVERY STROP 50TNX10M	6.91
RBRY50T15	300	600	MONGOOSE RECOVERY STROP 50TNX15M	10.28
RBRY50T20	300	600	MONGOOSE RECOVERY STROP 50TNX20M	13.66
RBRY70T03	300	600	MONGOOSE RECOVERY STROP 70TNX3M	3.23
RBRY70T06	300	600	MONGOOSE RECOVERY STROP 70TNX6M	6.09
RBRY70T10	300	600	MONGOOSE RECOVERY STROP 70TNX10M	9.91
RBRY70T15	300	600	MONGOOSE RECOVERY STROP 70TNX15M	16.69
RBRY70T20	300	600	MONGOOSE RECOVERY STROP 70TNX20M	19.47
RBRY100T6	300	600	MONGOOSE RECOVERY STROP 100TNX6M	7.26
RBRY100T10	300	600	MONGOOSE RECOVERY STROP 100TNX10M	11.77
RBRY100T15	300	600	MONGOOSE RECOVERY STROP 100TNX15M	17.39
RBRY100T20	300	600	MONGOOSE RECOVERY STROP 100TNX20M	23.02
RBRY150T3	300	600	MONGOOSE RECOVERY STROP 150TNX3M	5.51
RBRY150T6	300	600	MONGOOSE RECOVERY STROP 150TNX6M	10.08
RBRY150T10	300	600	MONGOOSE RECOVERY STROP 150TNX10M	16.19
RBRY150T20	300	600	MONGOOSE RECOVERY STROP 150TNX20M	31.44
RBRY200T6	300	600	MONGOOSE RECOVERY STROP 200TNX6M	13.57
RBRY200T10	300	600	MONGOOSE RECOVERY STROP 200TNX10M	21.59
RBRY200T15	300	600	MONGOOSE RECOVERY STROP 200TNX15M	31.62
RBRY300T6	N/A	1000	MONGOOSE RECOVERY STROP 300TNX6M	18.64
RBRY300T10	N/A	1000	MONGOOSE RECOVERY STROP 300TNX10M	30.04
RBRY300T15	N/A	1000	MONGOOSE RECOVERY STROP 300TNX15M	44.3
RBRY350T10	N/A	1000	MONGOOSE RECOVERY STROP 350TNX10M	36.05
RBRY350T15	N/A	1000	MONGOOSE RECOVERY STROP 350TX15M	53.12
RBRY400T15	N/A	1000	MONGOOSE RECOVERY STROP 400TX15M	67.57
RBRY500T15	N/A	1000	MONGOOSE RECOVERY STROP 500TX15M	84.08

**Mongoose® Kinetic Recovery Kit**

Product Code	Eye Size (mm)	Description	Weight (kg)
RBRY13TKRK	250mm	MONGOOSE KINETIC REC KIT LIGHT VEHICLE 13T	5

**Stealth® UHMwPE 12 Strand Braid**

Product Code	Diameter (mm)	Unspliced Strength (metric tonnes)	MBL Spliced Strength (metric tonnes)	Weight /100m (kg)	Product Code	Diameter (mm)	Unspliced Strength (metric tonnes)	MBL Spliced Strength (metric tonnes)	Weight /100m (kg)
RBRS01WAM	1	0.32	0.29	0.15	RBRS34WAM	34	103.3	93.0	65.1
RBRS015WAM	1.5	0.51	0.46	0.25	RBRS36WAM	36	118.7	106.8	78.4
RBRS0175WAM	1.75	0.64	0.58	0.31	RBRS38WAM	38	131.1	118.0	85.8
RBRS02WAM	2	1.02	0.91	0.49	RBRS40WAM	40	145.6	131.0	96.1
RBRS025WAM	2.5	1.2	1.1	0.5	RBRS42WAM	42	158.9	143.0	103.5
RBRS03WAM	3	1.4	1.3	0.7	RBRS44WAM	44	174.4	157.0	115.4
RBRS04WAM	4	2.4	2.2	1.2	RBRS48WAM	48	201.1	181.0	133.1
RBRS05WAM	5	3.4	3.1	1.7	RBRS52WAM	52	230.0	207.0	155.3
RBRS06WAM	6	4.8	4.3	2.5	RBRS54WAM	54	238.9	215.0	168.4
RBRS07WAM	7	5.8	5.2	3.0	RBRS56WAM	56	271.1	244.0	177.5
RBRS08WAM	8	7.3	6.6	3.7	RBRS60WAM	60	297.8	268.0	210.7
RBRS09WAM	9	9.2	8.3	4.7	RBRS64WAM	64	333.3	300.0	227.8
RBRS10WAM	10	10.8	9.7	5.4	RBRS68WAM	68	370.0	333.0	295.8
RBRS11WAM	11	13.0	11.7	6.4	RBRS72WAM	72	403.3	363.0	298.7
RBRS12WAM	12	17.0	15.3	8.4	RBRS76WAM	76	444.4	400.0	339.0
RBRS14WAM	14	19.9	17.9	10.4	RBRS80WAM	80	466.7	420.0	357.0
RBRS16WAM	16	25.6	23.0	14.3	RBRS82WAM	82	507.8	457.0	395.0
RBRS18WAM	18	34.8	31.3	19.2	RBRS86WAM	86	531.1	478.0	439.0
RBRS20WAM	20	41.3	37.2	25.1	RBRS88WAM	88	666.7	600.0	506.0
RBRS22WAM	22	45.8	41.2	30.1	RBRS92WAM	92	755.6	680.0	539.0
RBRS24WAM	24	55.0	49.5	35.0	RBRS96WAM	96	825.6	743.0	591.0
RBRS26WAM	26	67.8	61.0	40.9	RBRS104WAM	104	933.3	840.0	665.0
RBRS28WAM	28	76.7	69.0	47.3	RBRS110WAM	110	1,018.9	917.0	740.0
RBRS30WAM	30	87.4	78.7	53.2	RBRS112WAM	112	1,116.7	1,005.0	814.0
RBRS32WAM	32	94.0	84.6	62.1	RBRS120WAM	120	1,220.0	1,098.0	900.0

**Grip Tech**

Product Code	Colour	Breakload (t)	SWL (t)	Cable Size Range (mm)	Leg Length (m)	Dia. of Eye (mm)
BRS005GT	Pink	5	1	5-20	1.5	14
BRS015GT	Orange	15	3	10-30	2.5	22
BRS020GT	Yellow	20	4	15-35	3.0	24
BRS030GT	Green	30	6	20-40	5.0	30
BRS080GT	Blue	80	16	30-90	8.5	42
BRS125GT	Purple	125	25	50-100	10	48
BRS200GT	Grey	200	40	90-150	15	64

**Mongoose® HMPE Eye Guard**

Product Code	Description	Weight (kg)
RBRY18110CG	MONGOOSE UHMwPE CHAFE GUARD 18CMX110CM	2.3

**HMPE Chafe Guard**

Product Code	Size	Colour	Unit	Construction	Stock Status
BRY05GPCG	5-8 mm	Black	Metre	32 Plait	Stocked
BRY08CPCG	8-12 mm	Black	Metre	48 Plait	Stocked
BRY10GPCC	10-14 mm	Black	Metre	48 Plait	Stocked*
BRY14GPCG	14-18 mm	Black	Metre	48 Plait	Stocked

Product Code	Size	Colour	Unit	Construction	Stock Status
RBRY05CG	5 - 8 mm	White	Metre	32 Plait	Stocked
RBRY08CG	8 - 12 mm	White	Metre	48 Plait	Stocked
RBRY10CG	10 - 14 mm	White	Metre	48 Plait	Stocked
RBRY14CG	14 - 18 mm	White	Metre	48 Plait	Stocked

Note: White is uncoated for colour customisation via a urethane rope coat

**Chafe Pro Commercial Series**

Product Code	Yacht Grade	Cover Line Size	Unit Length (cm)
BRY35CP	08-HB-02	25-45mm	61
BRY36CP	08-HB-03	25-45mm	91
BRY37CP	08-HB-04	25-45mm	122
BRY38CP	08-HB-06	25-45mm	183
BRY39CP	08-HB-08	25-45mm	244
BRY40CP	08-HB-10	25-45mm	305
BRY41CP	08-HB-12	25-45mm	366
BRY42CP	08-HB-20	25-45mm	610
BRY43CP	12-HB-03	38-64mm	91
BRY44CP	12-HB-04	38-64mm	122
BRY45CP	12-HB-06	38-64mm	183
BRY46CP	12-HB-08	38-64mm	244
BRY47CP	12-HB-10	38-64mm	305
BRY48CP	12-HB-12	38-64mm	366
BRY49CP	12-HB-20	38-64mm	610
BRY50CP	16-HB-04	64-100mm	122
BRY51CP	16-HB-06	64-100mm	183
BRY52CP	16-HB-08	64-100mm	244
BRY53CP	16-HB-10	64-100mm	305
BRY54CP	16-HB-12	64-100mm	366
BRY55CP	16-HB-20	64-100mm	610

Fibre Type	Description	Specific Gravity	Sensitive To	Resistant To	Heat Reaction	Strength And Elongation
<b>Sisal</b>	Agave Sisalana/ Vegetable fibre	1.5	Mineral acids, paints, detergents, chemical salts, fats, weathering and sunlight	Volatile petroleum solvents, batching oils and alkalis	Burns as fire touches flame. Supports combustion.	Fibre elongation: Dry: 2.9%, Wet 3.4% Rope Elongation: Dry: 13%, Wet 16% Extension causes rupture.
<b>Manila</b>	Abaca Musa Textilis 65% cellulose, 12% water, 22% pectin	1.5	Mineral acids, weak or strong paints, detergents, chemical salts, fats, weathering and sunlight	Volatile petroleum solvents, batching oils and alkalis	Critical temp is 150°C after which fibre burns at flame. Supports combustion.	Fibre elongation: Dry: 2.8%, Wet 3.2% Rope Elongation: Dry: 13%, Wet 15% Extension causes rupture.
<b>PP (Polypropylene)</b>	Continuous Filament	0.91	Sodium hypochlorite and some hot organic solvents. Very susceptible to sunlight but with suitable additives, loss of strength is retarded.	Hot and cold acids like alkalis	Shrinks rapidly from flame. Curls and melts at about 165°C.	High tenacity. Good recovery from stretch and elongation at break for film ropes is 25-30%.
<b>PE (Polyethylene)</b>	Continuous Filament	0.95	Xylene at 95°C, hot nitric or Sulfuric Acids. Some hot organic solvents. Sensitive to prolonged sunlight exposure.	Most acids, alkalis, grease, oils and organic solvents.	Softens 100°C, Melts 110-120°C.	High tenacity with good recovery after stretch and extension at break of 50%.
<b>Polysteel®</b>	Continuous Filament	0.91	Most Inorganic Acids (Hydrochloric acid, sulfuric acid (dilute), phosphoric acid, acetic acid), Alkalis (Sodium hydroxide (caustic soda), potassium hydroxide, ammonia)	Most inorganic acids (Hydrochloric acid, sulfuric acid (dilute), phosphoric acid, acetic acid), alkalis (Sodium hydroxide (caustic soda), potassium hydroxide, ammonia), Effect of organic solvents - soluble in chlorinated hydrocarbons.	Melts at 164°C Working temp limit Low -26°C, High 93°C.	Equivalent wet/dry strength ratio. Elongation 18-22% at Break.
<b>Polyester</b>	Continuous Filament	1.38	Alkalis, Phenolic Compounds, Sulfuric Acid.	Most Organic and Mineral Acids, Solvents, Bleaches and Oxidizing Agents.	Softens 228°C, Melts 255°C.	Equivalent wet/ dry strength ratio. Elongation 35% at Break.
<b>Polyamide (Nylon)</b>	Continuous Filament	1.14	Strong Acids and Oxidizing agents, soluble in formic, Sulfuric Acids and Phenolic and most Bleaches.	Alkalis, Alcohols, esters, Hydrocarbons and most bleaches	Nylon 6,6 Softens 229°C. Melts 249-260°C.	Elongation Dry 40 %, Wet 35%. 90-95% strength ratio wet/ dry.
<b>UHMWPE Ultra High Molecular Weight Polyethylene</b>	Continuous Filament	0.97 g/cm3	Strong oxidising agents. Chlorosulfonic & Nitric acids at high temperatures. Slightly affected by Sodium Hydroxide (pH>14)	Most acids & alkalis, cold alcohols, ethers, esters, ketones & bleaches.	Softens 144°C, Melts 152°C.	Equivalent wet/dry strength ratio. Elongation 4% at Break.
<b>Technora®</b>	Spun Filament	1.39	Hydrochloric, hydrobromic and sulphuric acids, bleaching and sunlight.	Mineral and organic acids, alkalis, organic solvents, sea water and steam.	500°C+ decomposition.	Equivalent wet/dry strength ratio. Elongation 4.5% at Break.
<b>Aramid (Kevlar®)</b>	Continuous Filament	1.44	Hydrochloric, hydrobromic and sulphuric acids, bleaching and sunlight. Highly sensitive to abrasion.	Mineral and organic acids, alkalis, organic solvents, mildew and fungi.	371°C decomposition.	Equivalent wet/dry strength ratio. Elongation 4% at Break.

# NOTES

A series of horizontal dotted lines for writing notes.



Photo: Lifting & Rigging Brochure, Jan 2026

## AUSTRALIA

Head Office - Sydney  
PO Box 4205, Bradbury  
NSW 2560  
Australia

FREEPHONE 1800 644 404  
E-MAIL [sales@donaghys.com](mailto:sales@donaghys.com)

## NEW ZEALAND

Head Office - Christchurch  
16 Sheffield Crescent, Harewood  
PO Box 20-449, Christchurch  
New Zealand

FREEPHONE 0800 942 006  
E-MAIL [sales@donaghys.com](mailto:sales@donaghys.com)

**DONAGHYS**  
PERFORMANCE FIRST